

SONUS M

Technical information



Quality standard

ISO 23351-1:2020 (Speech level reduction class B)

Other documents available

Technical guide for SONUS acoustic pods
 User manual for SONUS acoustic pods
 Troubleshooting guide for SONUS acoustic pods
 NARBUTAS product care guide

10 year Warranty

See Warranty statement



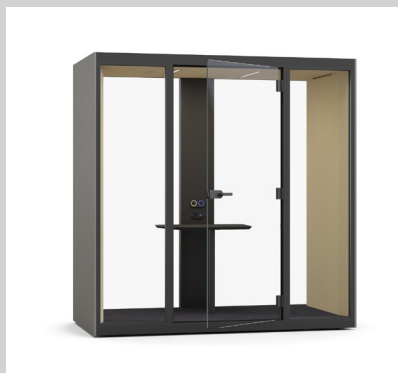
Types

- Acoustic pod with PET felt back wall, ventilation and lighting controller (1)
- Acoustic pod with glass back wall, ventilation and lighting controller (2)

1



2



Side wall

- 0.47" thick MDP (chipboard);
- 0.71" thick MDF (medium density fiberboard);
- 0.35" PET felt;
- 1.97" × 0.59" metal tube;
- Profiles made of 0.08" and 0.04" metal sheets;
- 1.18" acoustic foam.

Media wall

- 0.47" thick MDP cover in HPL and 0.04" ABS edging.
- 0.98" thick MDP
- 0.98" thick melamine
- Welded and black powder coated metal frame
- Electric cables for power socket, power supply and lighting and ventilation controller.

HPL desktop

- 1.02" MDF covered in HPL with sloping painted edges. The bottom edges of the desktop are sloped 45°;
- Load capacity – 110 lbs.

Power socket

- 1 AC power socket 100–240 V;
- Integrated USB fast charger (USB Type A+C, max 5A);
- Dimensions 7.32" × 2.83" × 2.56";
- Power socket standards: EU, FR, UK, CH, US;
- Cable length: 2.62 ft.;
- 60% recycled FR polycarbonate, 40% virgin polycarbonate.

PET felt back wall

- 0.98" thick MDP (chipboard);
- Welded and black powder coated metal frame;
- 0.35" thick PET felt.

Glass back wall

- Powder coated aluminum profile with PVC sealing;
- 0.2" + 0.2" laminated glass with acoustic film, clear;
- The top and bottom of the aluminum profile are covered with 0.63" MFC (melamine) panels with 0.04" ABS edging.

MFC (melamine) panel or HPL panel

- 0.63" thick MFC panels with 0.04" ABS edging;
- 0.67" thick MDF covered in HPL with 0.04" ABS edging.

Left-handed or right-handed doors

- Powder coated aluminum profile with PVC sealing;
- 0.2" + 0.2" laminated and tempered safety glass (TSG) with acoustic film, clear;
- Clear opening width of the door – 35.43";
- The top and bottom of the aluminum profile are covered with 0.63" MFC (melamine) panels with 0.04" ABS edging.

Double layered ceiling

- Top layer made of 0.47" thick MFC (melamine) panel with 0.04" ABS edging;
- Bottom layer made of 0.47" thick MDP (chipboard) and 0.35" thick PET felt;
- Powder coated metal profiles;
- Lid for the control unit made of a 0.04" powder coated metal sheet and 0.35" thick PET felt;
- PIR sensor mounted in the center of the ceiling;
- Fan grill made of powder coated metal sheet;
- Available power supply from the ceiling (2.36" cable grommet included; slot not predrilled).

Floors

- Metal welded frame made of tube with 0.24" metal sheet support plate, powder-coated construction;
- Top layer made of 0.98" thick MFC (melamine) with 0.08" ABS edging;
- 0.16" thick floor carpet made of polyester, with antistatic properties;
- Feet with height adjustment up to +1.77";
- Castors made of zinc steel housing and polyurethane wheels.

Control box

- Input (GST18i3 male): 100–240 V;
- Output (GST18i3 female): 100–240 V;
- Frequency: 50/60 Hz;
- Power cable: EU, UK, FR, CH, US – GST18i3 female, 9.84 ft.;
- Power output cable length: 9.84 ft. – GST18i3 male – GST18i3 female;
- Power consumption – max 110W, standby 4.5W.

Lighting

- LED bar mounted into the ceiling (11.0 W), color temperature 4000K;
- Light output: 1508 Lm;
- Illuminance up to 500 lux on the desktop;
- Color consistency: 3-step MacAdam;
- Replacement LED can only be purchased from the manufacturer of the acoustic pod.

Ventilation

- 4× air supply fans are installed in the ceiling;
- Maximum airflow approx. 14,130 ft³/h;
- Acoustical noise level: 24.6 dB(A) per fan.

Power outlet

- AC power socket (100–240 V) with integrated USB fast charger (USB Type A+C, max 5A);
- Power socket standards: EU, FR, UK, CH, US.

Pouf with backrest (Optional)

Seat

- Frame constructed from plywood, hardboard, chipboard, plastic edge trim. Assembled using glue and staples.
- Steel zigzag springs assembled with plastic rapid clips;
- Two layers of VB foam with different densities: VB3035 1.87 lb/ft³ and VB3050 1.87 lb/ft³;
- Upholstered with fabric without gluing;
- Powder-coated metal tube with a metal rack connector for attaching the seat to the backrest.

Backrest

- Frame constructed from hardboard, chipboard. Assembled using glue and staples.
- One layer of VB3035 1.87 lb/ft³ foam;
- Upholstered with fabric without gluing.
- Powder-coated metal tube with a plastic rack connector for attaching the backrest to the seat.

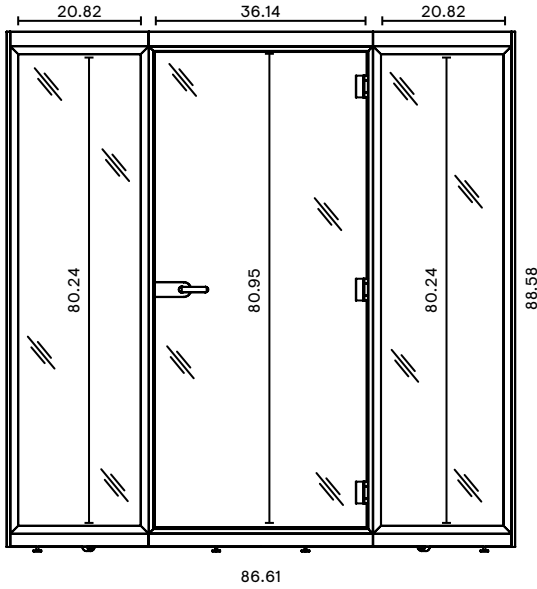
Legs

- Powder-coated 1.18" steel tube;
- 0.16" thick steel sheet.
- Plastic glides.

Range

Acoustic pod with PET felt back wall

Product weight: 1475 lbs



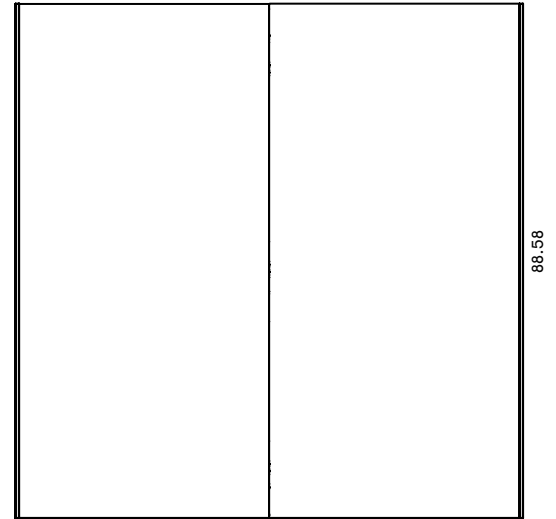
86.61

Front



46.7

Side

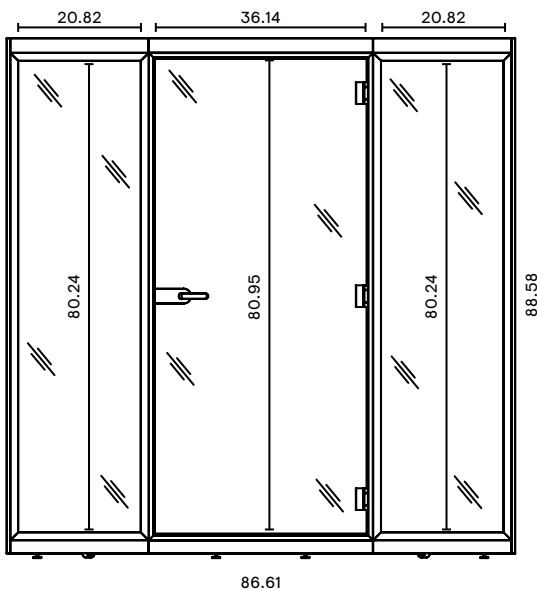


86.61

Back

Acoustic pod with glass back wall

Product weight: 1389 lbs



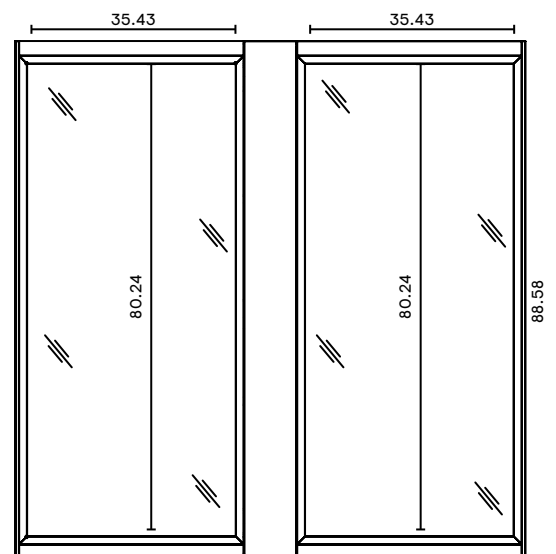
86.61

Front



46.7

Side

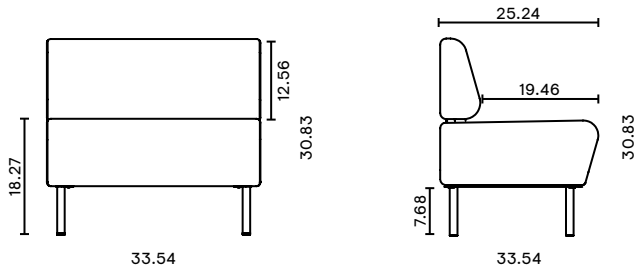


86.61

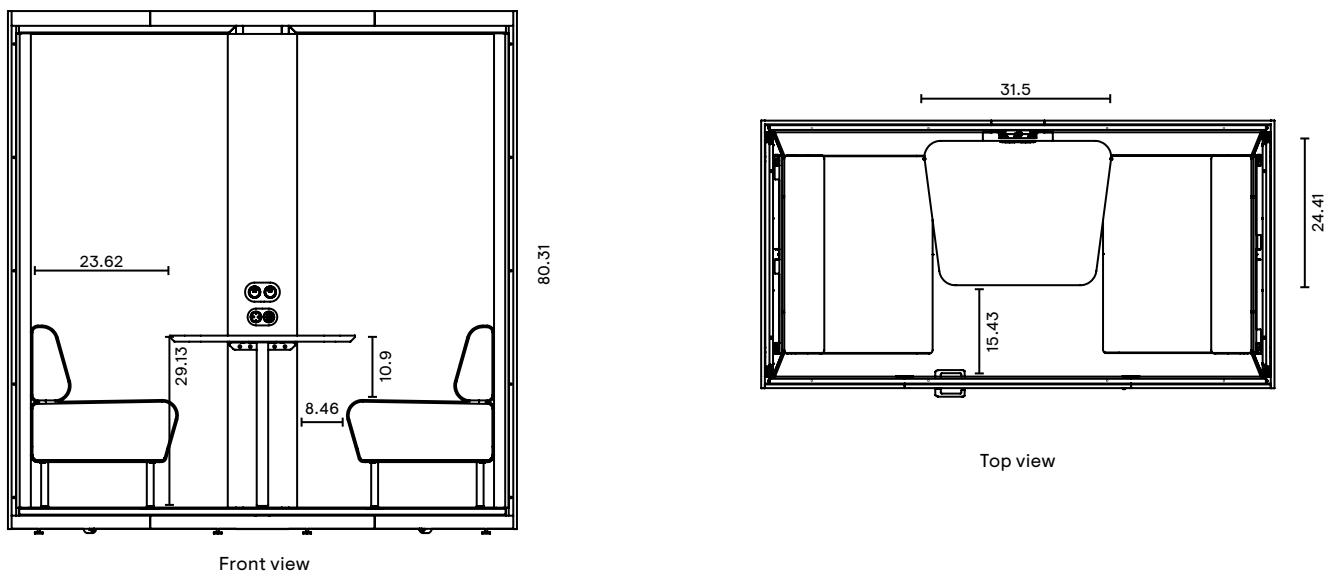
Back

Pouf with backrest

Product weight: 43 lbs



Internal dimensions



Additional information

The recommended height of the room in which the SONUS M will be assembled should be at least 8 ft. 1".

SONUS M can be powered either from the top or the bottom of the pod.

SONUS M is designed to be flexible, and its components are universal. Placement of the following components can be arranged during installation:

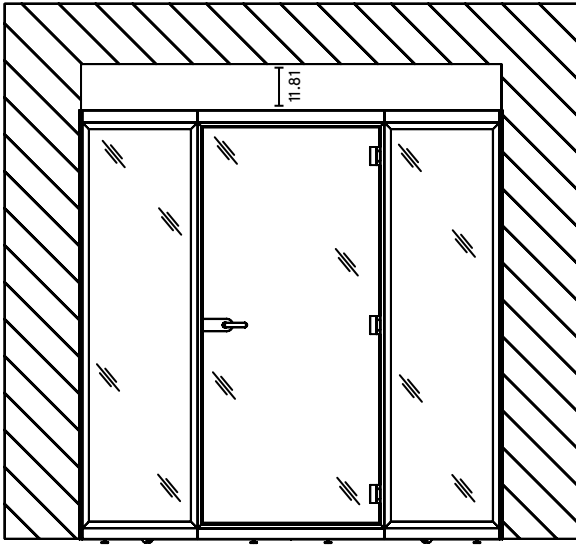
- Door and back wall position – both the door and the back wall (glass back wall and PET felt back wall) are interchangeable.
- Door swing direction – when placing an order, the opening direction (R/H or L/H) must be specified. However, it is possible to change it later on-site.

The SONUS technical guide contains useful information about servicing and troubleshooting the pod. The guide can be accessed by scanning the QR code located on the control box or by following [this link](#).

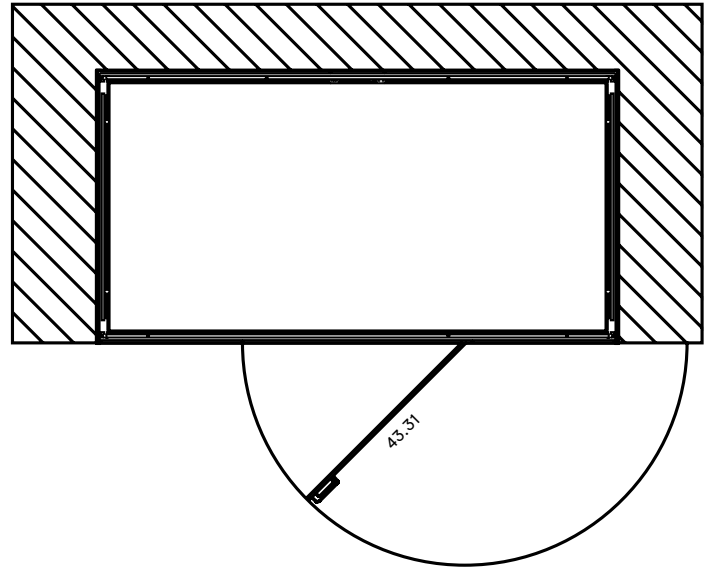
Pod placement information

Placement restrictions when SONUS M:

- Doors – 43.31", ceiling – 11.81"



Front view



Top view

SONUS M is shipped on a pallet in a stackable wooden crate (108.46 ft³).

